

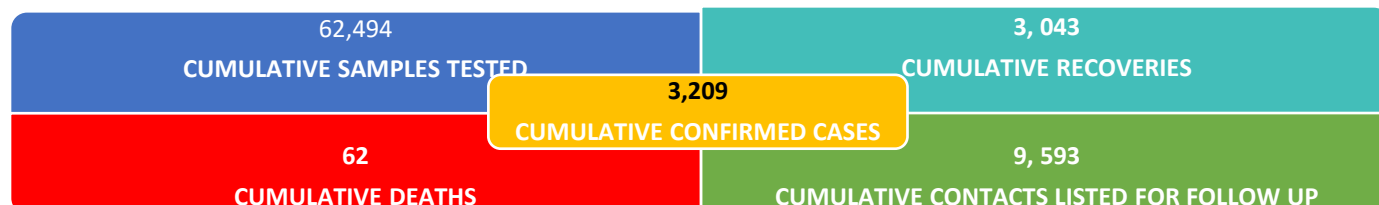


PUBLIC HEALTH EMERGENCY OPERATIONS CENTRE (PHEOC)

COVID-19 WEEKLY SITUATION REPORT

Issue No: 41

Reporting Period: 07-13 December (week 50)



1. KEY HIGHLIGHTS

- A cumulative total of **3,209** cases have been confirmed and **62** deaths with case fatality rate (CFR) of 1.93 percent have been recorded, including **261(8.1% of all cases)** imported cases as 13 December 2020.
- **1** Severe COVID-19 patient currently admitted in the Infectious Disease Unit (IDU) and 0 cases are currently isolated in health facilities in the Country; thus the National IDU has 99 percent bed occupancy available.
- **3,043** cases have been discharged to date with recovery rate of 94.8 percent.
- 141 Health Care Workers have been infected since the beginning of the outbreak with one death.
- **9,593** cumulative contacts have been registered, of which **9,071(94.6%)** have completed the 14-day quarantine. Currently, 153 contacts are being followed.
- Cumulatively, 63,910 laboratory tests have been performed with 5.0 percent positivity rate.
- There was cumulative total of **1,639** alerts of which 93.3 percent (n=1,530) have been verified and sampled; Most alerts have come from Central Equatorial (75.4 percent), Eastern Equatorial (4.1percent); Upper Nile State (3.4 percent) and the remaining 17.1 Percent from the other States and Administrative Areas.
- As of 13 December, 24 Counties (30.0 percent) out of 80 Counties of ten states of South Sudan are affected (figure 4).

2. BACKGROUND

South Sudan confirmed its first COVID-19 case on 5 April 2020. To date 3,209 cases have been confirmed out of 63,910 tests performed by the National Public Health Laboratory (NPHL) and other decentralized Public Health Laboratories Networks in Nimule, Bor, and Malakal and UN clinics in Juba with 3,043 recoveries and 62 deaths, yielding the case fatality rate (CFR) of 1.93 percent.

South Sudan is classified as having clusters of transmission in general and community transmission in Juba, the capital city.

3. EPIDEMIOLOGY AND SURVEILLANCE

This report includes analysis for 3,209 cases the Public Health Emergency Operation Centre (PHEOC) has line listed as confirmed cumulative cases. There are 3,043 recoveries and 62 deaths with case fatality rate (CFR) of 1.93 percent. Cases detected among South Sudanese nationals accounted for (77 percent) of all cases, whereas (14.3 percent) are foreigners and 8.7 percent unknown. There have been 261 imported cases (12 new) have been registered to date coming mostly from Kenya (18), Uganda (39), Eritrea (5), DRC (2), Somalia (1), Netherlands(1) and South Sudanese returnees (105), and 70 unknowns.



MINISTRY OF HEALTH (MOH)

Confirmed cases range from 2 months - 90 years of age with an average of **36.4 years**. As for gender, 72.0 percent of confirmed cases were diagnosed in men, 23.8 percent in women, and 4.2 percent unknown. Young men within the 30-39 age groups are the most at risk for COVID-19. Only 19.0 percent (n=609) cases reported symptoms, of which the most frequent have been: cough-404, fever- 351, runny nose - 257, shortness of breath- 230, fatigue -227, headache- 203, sore throat- 135, muscle aches -129, and others -226. New and cumulative; age, sex; frequency of symptoms; and geographical distribution of COVID-19 confirmed cases are shown in figures 1, 2, 3 and 4 and table 1 respectively.

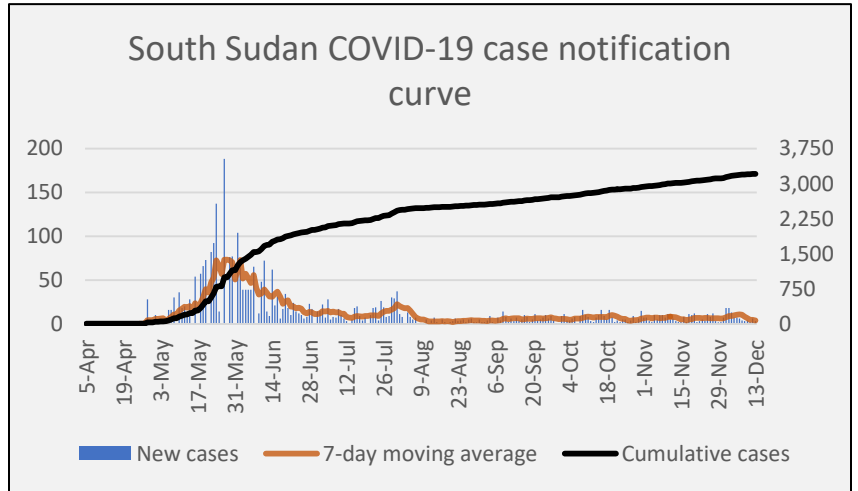


Figure 1: COVID-19 Case Notification Curve

As of 13 December 2020, the affected

Counties are alphabetically: Abyei (52), Aweil Center (8), Aweil East (5), Baliet (1), Ikotos (5), Juba (2,544), Maban (7), Magwi (3), Malakal (84), Nyirol (26), Rubkona (10), Rumbek North (1), Rumbek Center (22), Rumbek East (1), South Bor (33), Tonj North (1), Torit (40), Twic Warrap (3), Twic East (2), Uror (2), Wau (31), Yambio (7), Yei (23), Yirol West (1), Unknown (11).

Figure 2: Age and sex distribution of COVID-19 confirmed cases (n=2 931[‡])

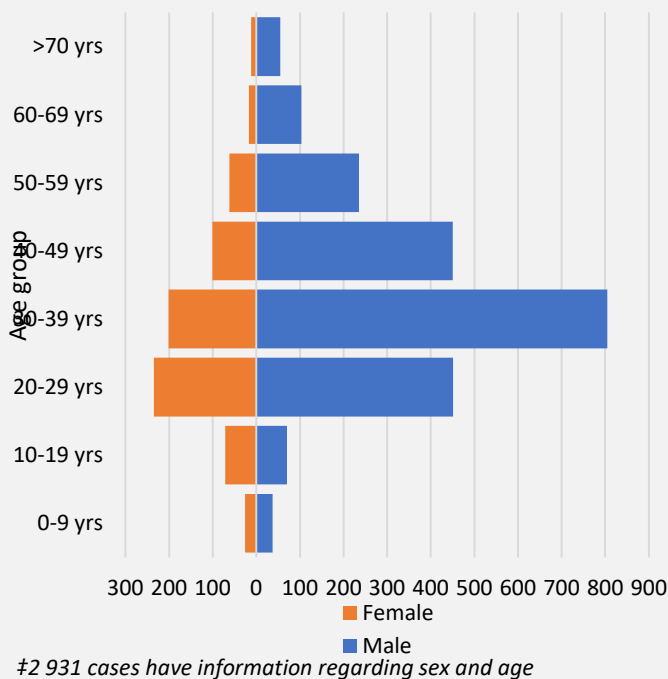
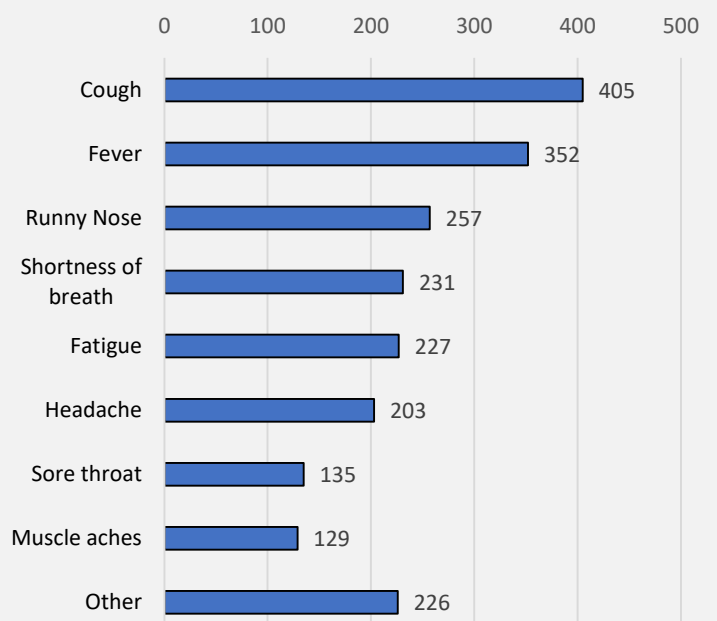


Figure 3: Frequency of symptoms among those reporting (n=610[§])

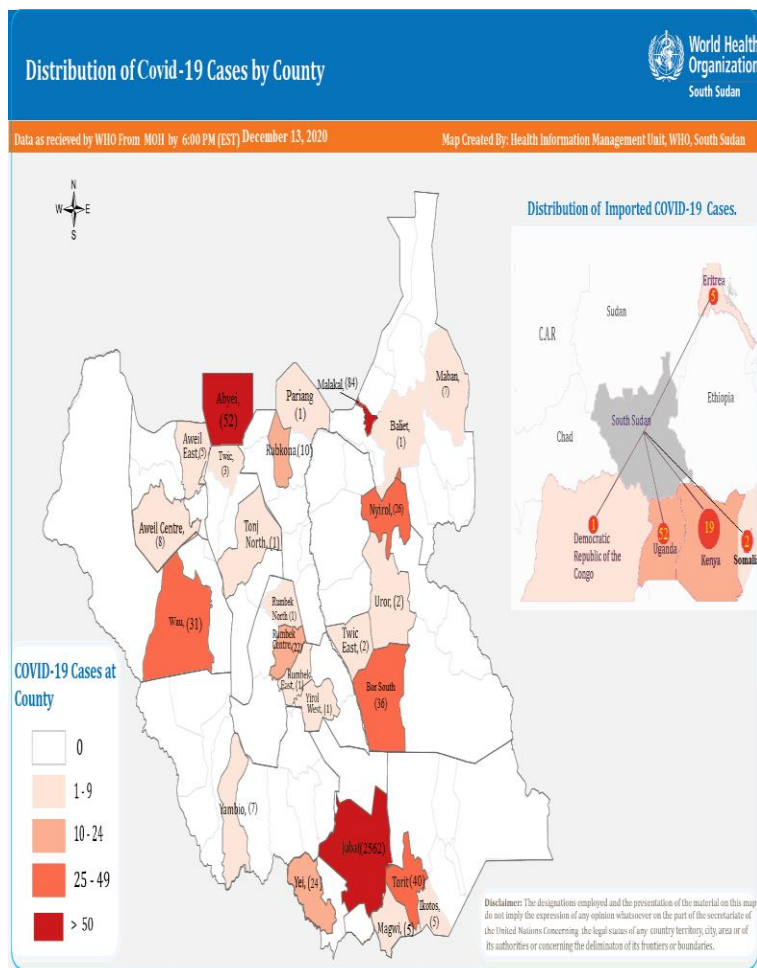


[§]Only 610 cases reported having symptoms.



MINISTRY OF HEALTH (MOH)

Figure 4: Distribution of confirmed COVID-19 cases according to Counties **Table1: Summary of COVID-19 Cases by State including imported as of 13 dec**



State	Cases		Deaths	
	New	Cumulative	New	Cumulative
Central Equatoria	15	2586	0	46
Eastern Equatoria	0	50	0	3
Jonglei	0	66	0	1
Lakes	0	25	0	6
Northern Bahr el Ghazal	0	13	0	0
Unity	1	11	0	1
Upper Nile	0	92	0	4
Warrap (including Abyei)	0	56	0	0
Western Bahr el Ghazal	0	31	0	0
Western Equatoria	0	7	0	0
Imported	12	261	0	1
Unknown	0	11	0	0
Pending classification	0	0	0	0
Total	28	3209	0	62

Contact tracing summary

- **9593** cumulative contacts have been registered; of which **9071 (94.6%)** have completed the 14-day quarantine. Currently, 153 contacts are being followed.
- As of 13 December 2020, 134 (87.6%) contacts (old and new) were reached.
- Currently, 153 contacts are being followed; of these 134 (87.6%) contacts were reached. The **case to contact ratio is 1:3**.

4. PUBLIC HEALTH ACTION / RESPONSE INTERVENTIONS

4.1 COORDINATION AND LEADERSHIP



4.2 LABORATORY

The National Public Health Laboratory (NPHL) conducted 1,368 tests during the reporting week. The trend line in gray figure 5 shows the average percentage of tests that were positive over the last 7 days and currently sits at 2.91%. The orange bars show the percentage of tests conducted each day that were positive.

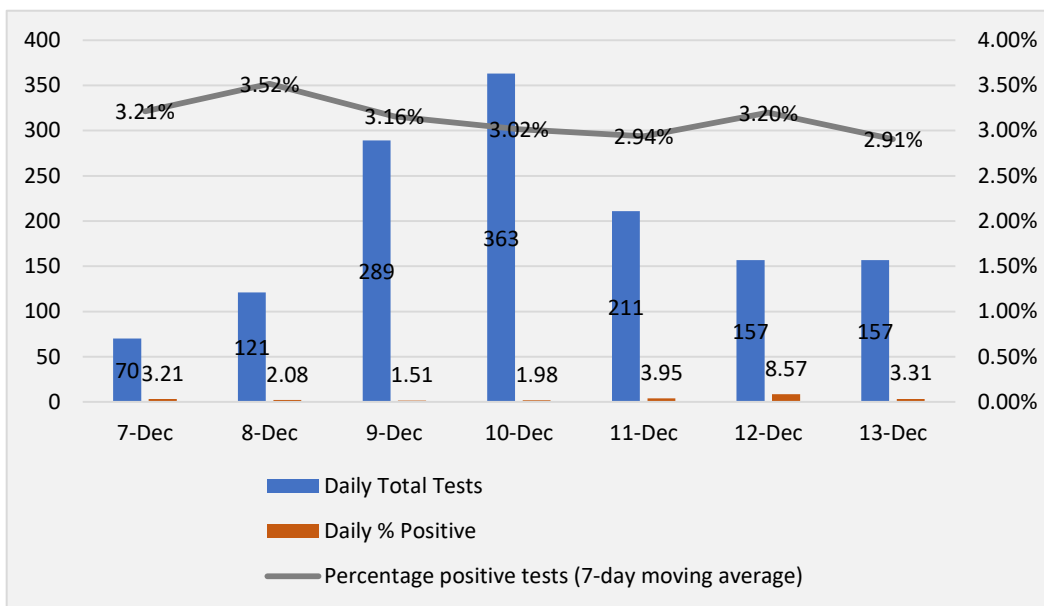


Figure 5: Lab testing capacity

4.3 SURVEILLANCE

- Household transmission investigation extended until 31st January 2021. Oral and nasal swabs, blood specimens, and in-depth interviews of those enrolled will continue over the course of four visits for the duration of the investigation.
- Final version of the COVID-19 CIF [case investigation form] SOP submitted to the Data Management TWG.
- Indicator data (November 2020) for the December Inter-Pillar meeting sent to EOC Management.
- Follow-up continues with COVID-19 testing sites – GXP, private lab, and mobile lab in Nimule – to report their data daily, including numbers of tests run, numbers of positives, and completed CIFs.
- Follow-up continues with EOC IM and Management to convene a meeting to review all revised SOPs from all pillars.

4.4 CASE MANAGEMENT

- Capacity building of frontline workers in Juba for critical care; basic and advanced life support is in progress at the IDU by IMC emergency medical team
- Equipment repositioning for ICU is in progress, biomedical engineer will support in installation and training
- 312 triage points are functional countrywide, 21 COVID-19 facilities; 11 being part of state/county hospital



MINISTRY OF HEALTH (MOH)

- 1 severe case on admission at Dr. John Garang IDU
- Transition plan to EP&R progressing adequately.
- This week 63 confirmed positive cases were referred to MEDAIR (38 were reached) while 18 alerts were referred to MEDAIR (15 were reached)
- Cumulative, 905 cases have been referred to MEDAIR (589 reached) and 274 alerts have been referred (209 reached)
- Active cases as of 7th December are 29 (28 have been discharged)
- Cumulative reach is 794, total enrolled are 619 and total exits are 589
- Save the children completed a program in Juba with OPEN supporting 100 volunteers trained in RCCE for COVID-19, home-based care and supervisors and 100 health promoters supporting surveillance.

.5 INFECTION PREVENTION AND CONTROL (IPC):

- A total of 14,645 individuals (11,145 females and 3,990 males) were people engaged and reached with integrated COVID-19 and hygiene promotion services
- A total of 8,954 individuals (5,344 females and 3,610 males) continue to have access safe water supply through WASH facility upgrades (water supply and sanitation facility repairs, rehabilitation and new construction)
- A total 99 (47 females and 52 males) community health workers/hygiene promoters/Water user committees oriented on COVID 19 and hygiene awareness
- A total of 12 hand washing stations installed in health facilities and communities and provided with soap or 0.05% chlorine solution

4.6 RISK COMMUNICATION AND COMMUNITY ENGAGEMENT (RCCE):

- A total of 30,721 individuals (17,740 females and 12,981 males) were reached with key COVID-19 messages by community mobilisers through interpersonal awareness sessions at the 8,372 household visits.
- An estimated 26,236 persons received key COVID-19 messages through megaphone-walks.
- During this week, 6 community influencers received training / orientation on Risk Communication and Community Mobilization issues on COVID-19 including the religious leaders, teachers, women and youth leaders.
- 503 radio jingles were aired in 10 local languages through 40 radio stations across all 10 states in the country. 62 weekly talk shows on COVID-19 have been hosted, in which different content experts and influencers participated.

4.7 OPERATION SUPPORT AND LOGISTICS (OSL)

- World Food Program through the Logistics Cluster, and WHO, managed the Personal Protective Equipment (PPE) Common Request System, aiming at consolidating requests of in-country COVID-19 PPE commodities. During the reporting week, 3 requests received from 2 organizations (UNASS and WHO). All request forms have been approved by the Inter-Agency Technical team. A total of 34,300 surgical masks allocated from the common pool to be received in 3 locations across the country (Bor, Juba and Pibor).
- During the reporting period, 10 COVID-19 samples have been transported by air from Rubkona (9) and Yambio (1) to Juba for testing.
- The movement of Rapid Response Team (RRT) for COVID-19 related activities continues to be supported by the provision of 9 vehicles in Juba (7) and Nimule (2).



4.8 POINTS OF ENTRY (POE)

- In the reporting a total of 16,139 travelers underwent primary screening at various screening points in Juba, Wau and Nimule.
- The final joint POE mission was also conducted to Maban refugee camp 7-11 December in collaboration with UNHCR, WHO and HDC (Humanitarian Development Consortium). The mission included field visits to four screening including Shatta, Khortumbak Points of Entries (POEs), Elfoj/Kaya and Ofrah screening sites by the refugee camps.



Figure 6: A hand washing station and screening site supported by HDC/UNHCR activities in Maban County.

5. MAJOR CHALLENGES

- Insecurity and inaccessibility due to the inundation of certain access roads and areas in several states continue to pose hindrances in the implementation of RCCE activities.

6. RECOMMENDATIONS AND PRIORITY FOLLOW UP ACTIONS

- Polio campaign was scheduled in 4 states (Greater Equatoria and Jonglei) during 8-11 December, which, however, have been delayed in Jonglei state due the logistics challenges. The polio vaccination campaign implementation for the remaining days will be the prioritized activity during the next week.

7. CONCLUSIONS

- Ongoing coordination and collaboration amongst actors including National Task Force (NTF), National Steering Committee (NSC), State Tasks Forces (STFs), MOH/PHEOC and other government Ministries, agencies and departments is needed to strengthen the COVID-19 outbreak preparedness and response mechanisms.

For any clarifications, please contact

	Name	Title	Contact	Email address
1	Dr. Richard Lako	COVID -19 Incident Manager-MOH	+211926 592 520	Lakorichard08@gmail.com
2	Angelo Goup Thon Kouch	Ag. PHEOC Manager	+211917 611 031	majakdegoup99@gmail.com
3	Henry Gray	COVID -19 Incident Manager-WHO	+211928 740 879	grayj@who.int

FOR MORE INFORMATION and NOTIFICATION: Call: 6666 (TOLL FREE LINE) or +211922202028; Email: sspheoc@gmail.com